

2025 Early Education & Care Fact Sheet



Affordability

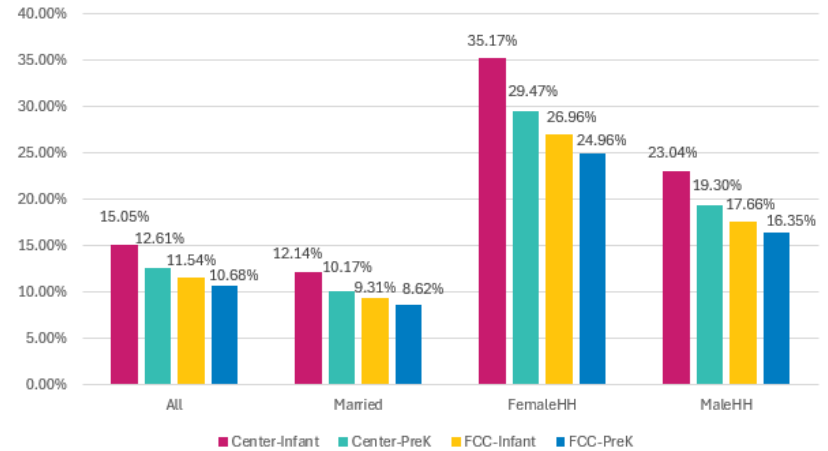
Annual Average Cost of Care	
Licensed Center Infants	\$12,659
Licensed Center 4-year-olds	\$10,605
Licensed Family Care Infants	\$9,703
Licensed Family Care 4-year-olds	\$8,982

Median Family Income	
All Families w/ Children Under 18	\$81,366
Married Couple Families	\$112,561
Female Head of Household*	\$39,499
Male Head of Household*	\$64,942
*No spouse present	

Child Care Subsidy	
Number Served Monthly - Sept. 2024	11,955

Nationally, Nevada is the 8th least affordable state for infant care in licensed family child care and the 17th least affordable in licensed centers. In January 2025, the income eligibility threshold to receive child care subsidy is 41% of State Median Income or \$33,072 for a family of three. A single mother with an infant and preschooler making more than this would not qualify and would spend 70% of her income on child care leaving \$818 each month for all other expenses. In September 2024, Nevada's Child Care Subsidy Program served about 6.5% of children living under 200% of the federal poverty level.

Cost of Licensed Care as a % of Median Family Income



Average Annual Price of Licensed Care by County

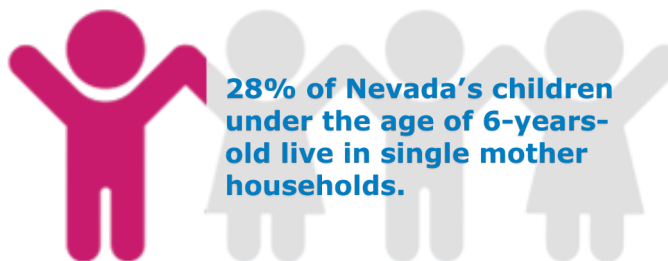
Centers			Family Child Care		
County*	Infants	4-Year-Olds	County*	Infants	4-Year-Olds
Carson City	\$10,804	\$9,166	Carson City	\$10,227	\$9,013
Churchill	\$8,753	\$7,300	Churchill	\$7,800	\$7,800
Clark	\$12,744	\$10,739	Clark	\$9,319	\$8,451
Douglas	\$11,059	\$10,250	Douglas	\$8,255	\$7,540
Elko	\$9,316	\$8,066	Elko	\$11,700	\$9,100
Humboldt	\$12,792	\$10,955	Humboldt	\$8,450	\$8,450
Lander	\$7,232	\$7,181	Lander	\$10,400	\$10,400
Lyon	\$10,108	\$9,165	Lyon	\$8,450	\$7,865
Nye	\$8,407	\$7,627	Mineral	\$7,800	\$7,800
Pershing	\$10,530	\$9,360	Nye	\$8,407	\$7,887
Storey	\$11,700	\$7,800	Washoe	\$10,215	\$9,626
Washoe	\$13,926	\$11,349			
White Pine	\$14,872	\$11,323			

*counties not listed do not have licensed care type for infants or 4-year-olds

Center-based infant-care exceeds the price of tuition and fees at UNR & UNLV by roughly 30%.
30 credits per year

Center-based infant care represents 15% of married couple median income in Clark County.

41% of Nevada's children ages 0-12 live under 200% of poverty.



28% of Nevada's children under the age of 6-years-old live in single mother households.

Single mothers in Clark County spend 35% of their income on center-based infant care.

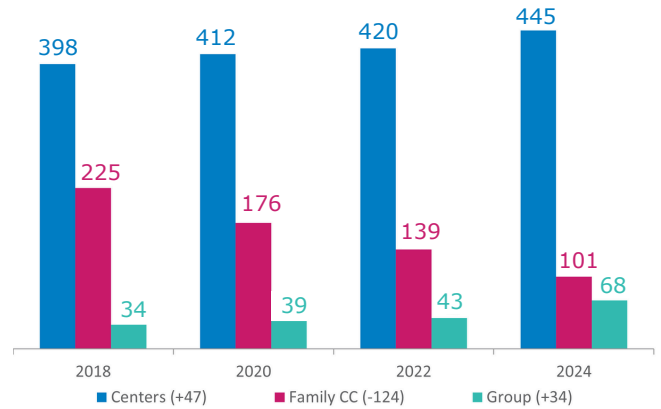
Supply

Nevada experienced a 55% decrease in Family Child Care from 2018-2024.

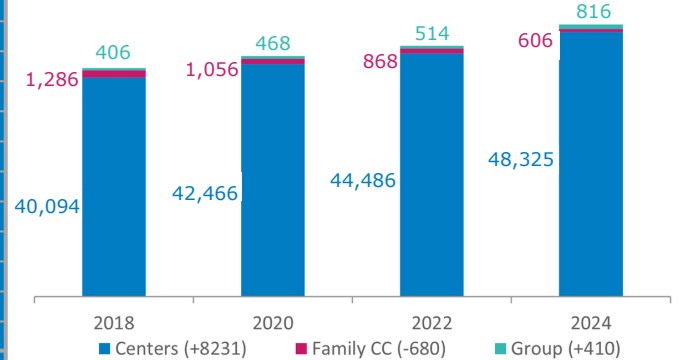
Nevada Counties	Licensed, Tribal & Military Child Care						PreK*	
	# Centers	Center Capacity	# Family Child Care (FCC) Sites	FCC Capacity	# Group FCC Sites	Group FCC Capacity	# District Sites	# District Slots
Carson City	19	1034	0	0	4	48	6	160
Churchill	10	519	0	0	1	12	1	125
Clark	259	33646	36	216	53	636	30	1125
Douglas	12	801	1	6	0	0	0	0
Elko	17	914	0	0	1	12	0	0
Esmeralda	0	0	0	0	0	0	0	0
Eureka	0	0	0	0	0	0	0	0
Humboldt	4	259	0	0	0	0	1	112
Lander	2	60	0	0	1	12	1	40
Lincoln	0	0	0	0	0	0	0	0
Lyon	10	617	2	12	3	36	8	180
Mineral	1	21	0	0	0	0	2	40
Nye	4	222	0	0	4	48	3	245
Pershing	3	118	0	0	0	0	1	40
Storey	3	188	0	0	0	0	0	0
Washoe	122	10746	62	372	1	12	32	729
White Pine	5	246	0	0	0	0	2	43
NEVADA	471	49391	101	606	68	816	87	2839

*Excludes PreK slots located in licensed child care centers.

Licensed Child Care Programs 2018-2024



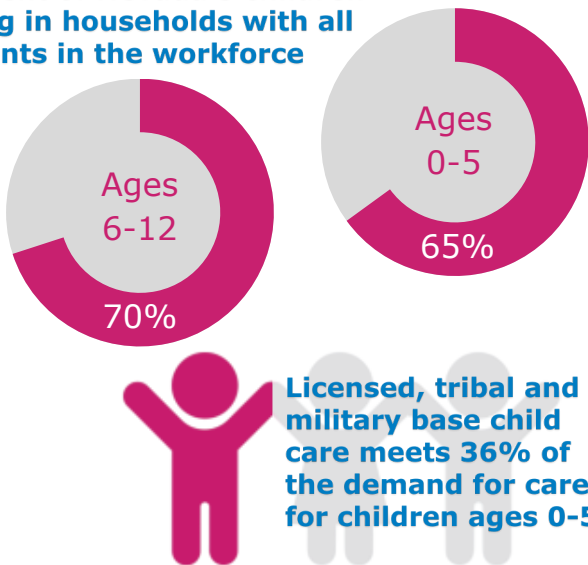
Licensed Child Care Capacity 2018-2024



Programs operating on tribal land and on military bases are not licensed under NRS 432A. Data above only include programs licensed under this statute. Head Start programs are licensed with the exception of Tribal Head Start programs.

Demand

Percent of Nevada's children living in households with all parents in the workforce



Children living in single-working parent and dual-earner households must have safe, reliable, high-quality child care to support their development while their parents work.

Nevada Counties	Total Children		All Parents Work	
	Ages 0-5	Ages 6-12	Ages 0-5	Ages 6-17
Carson City	3,831	4,443	75.94%	81.89%
Churchill	1,758	2,485	69.23%	73.08%
Clark	160,506	204,450	64.11%	69.32%
Douglas	2,046	3,010	71.40%	71.80%
Elko	4,539	5,793	50.92%	68.90%
Esmeralda	26	39	100.00%	64.52%
Eureka	121	119	92.56%	55.81%
Humboldt	1,444	1,665	55.62%	64.11%
Lander	300	791	34.00%	68.76%
Lincoln	165	438	3.03%	53.25%
Lyon	3,905	5,147	78.49%	79.36%
Mineral	355	385	85.25%	75.69%
Nye	2,835	3,293	37.82%	55.17%
Pershing	346	476	85.67%	88.55%
Storey	147	188	76.87%	53.27%
Washoe	32,726	39,974	70.57%	72.92%
White Pine	371	710	75.09%	77.27%
NEVADA	215,421	273,406	65.04%	70.11%

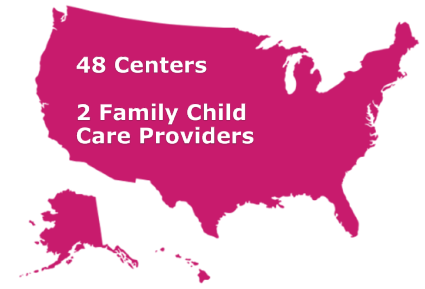
Quality



Nevada's Quality Rating Improvement System (QRIS) is a continuous improvement system available to licensed child care and district Pre-K programs. In December 2024, 100% of district Pre-K sites, 62% of centers, and 44% of family child care providers participated in QRIS. In addition, 9 tribal centers participate in the new Tribal Quality Improvement Model.

Star Level	Rating	Centers	Tribal QRIS	District Pre-K	Family Child Care	Total
★★★★★	Highest Quality	31		20	1	52
★★★★	Quality Plus	60		14	22	96
★★★	Quality	49		15	9	73
★★	Progressing Star	73		10	8	91
★	Rising Star	18		3	0	21
	Participating - Not Rated	16	9	23	11	59
	Waiting List	32			24	55
	TOTAL PARTICIPATING	278	9	85	75	447

Nationally Accredited Programs in Nevada

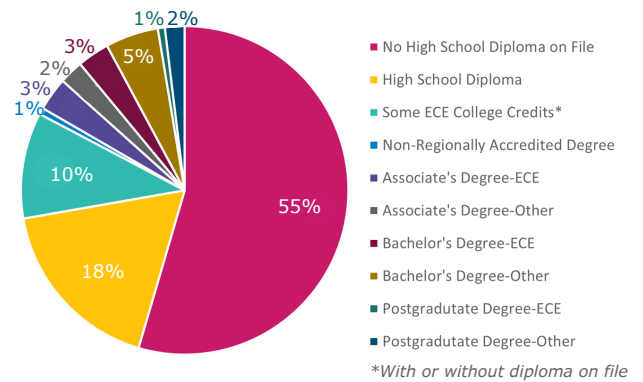


Accrediting entities listed on page 4.

Workforce

Workforce by Position	#
Center/Preschool Director/Administrator	541
Assistant Director/Program Director	405
Infant/Toddler Director	37
Infant/Toddler Asst. Director	23
Lead/Head Teacher	2633
Assistant Teacher/Aide	2291
Floater/Breaker/Substitute	596
Licensed Family Child Care Provider	134
Licensed Group Family Child Care Provider	65
Family, Friend and Neighbor	51
TOTAL child care workforce in licensed settings	6776

Licensed Child Care | Workforce Educational Attainment



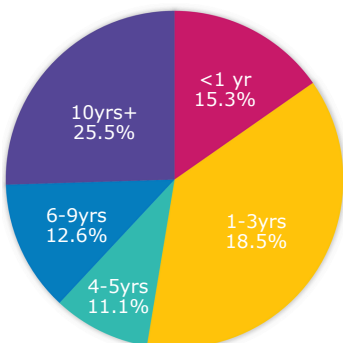
Nevada's licensed child care workforce has increased by **16% overall since 2018.**

Licensed Child Care Median Wage

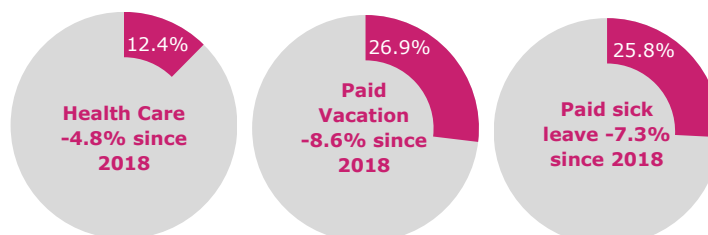
Lead Teacher - \$16.80/hr
Director - \$20.59/hr
Family Child Care - \$15/hr

Median wage for lead teachers has increased by **\$5.30 or 46% since 2018.**

Longevity in Licensed Child Care Field



Percentage of Licensed Child Care Workforce Reporting Health Care Benefits & Leave



Workforce data provided by The Nevada Registry, a workforce data system that captures important information about the Early Care and Education (ECE) workforce in Nevada.

Data Sources

Affordability

Median Family Income	United States Census Bureau. (2023). 2019-2023 American Community Survey 5-Year Estimates: Table S1903 Median income in the past 12 months (in 2020 inflation-adjusted dollars) [Data file]. Available from https://data.census.gov
Average Price of Care	The Children’s Cabinet (2024). Average child care rates by county, care level and provider type [Data file December 2024]. Reno, NV: Author
Average Price of Care in Nevada compared to other states	Child Care Aware of America (2024). Price of Care: 2023 Child Care Affordability Analysis. Retrieved from the Child Care Aware of America website: https://info.childcareaware.org/hubfs/2023_Affordability_Analysis.pdf . Washington, DC: Author.
Annual cost for Tuition and Fees at UNR & UNLV	University of Nevada, Reno. (2025). In-state undergraduate estimated costs. Retrieved February 5, 2025 from https://www.unr.edu/tuition-and-fees/cost-calculator and https://tuition.cashiering.unlv.edu/Home/Calculate . Tuition and fees only. The cost of room & board not included.
Child Care Subsidy Program Participation	Department of Health and Human Services Office of Analytics (2025). Subsidies Current Status September 2025 caseload [data dashboard]; Retrieved February 5, 2025 from Office of Analytics PowerBi dashboard: https://dhhs.nv.gov/Programs/Office_of_Analytics/DHHS_Office_of_Analytics/
State Subsidy Percentage	Total unduplicated children ages 0-12 on subsidy in 2024 divided by number of children ages 0-12 living under 200% of poverty from: United States Census Bureau. (2025). 2019-2023 American Community Survey 5-year Estimates: Table B17024 Age by ratio of income to poverty in the last 12 months. Available from the Census website: https://data.census.gov .

Supply

Licensed Child Care and Licensed Capacity + Net Loss from 2018 to 2024	Division of Welfare and Supportive Services Child Care and Development Program Child Care Licensing (2024, December). December 2024 Numbers Report. Carson City, NV: Author Net loss calculations performed by The Children’s Cabinet to determine the net loss of sites and capacity over last six years.
District Pre-K	Nevada Department of Education (2025). Nevada Ready Pre-K December 1, 2024 Count [Data file]. Retrieved February 27, 2025

Demand

Total Children in Nevada	United States Census Bureau. (2023). 2019*2023 American Community Survey 5-year estimates: Table B09001-Population under 18 years by age. Available from the Census website: https://data.census.gov
Children Living in Households Where All Parents Work	United States Census Bureau. (2023). 2019-2023 American Community Survey 5-year estimates: Table B23008-Age of own children under 18 years in families and subfamilies by living arrangements by employment status of parents. Available from the Census website: https://data.census.gov

Quality

QRIS Silver State Stars	Nevada Department of Education (2024, December). QRIS Participation Report. [Data file]. Retrieved February 27, 2025 from Q-Star data system.
Nationally Accredited Programs in Nevada	Accreditation program search performed on November 15, 2024 through the following accrediting entities: National Association for the Education of Young Children (NAEYC) http://www.naeyc.org , National Association of Family Child Care (NAFCC) http://nafcc.org , National Accreditation Commission for Early Care and Education Programs (NAC) http://earlylearningleaders.org , National Early Childhood Program Accreditation (NECPA) http://www.necpa.net , and Council on Accreditation (COA) http://www.coanet.org/accreditation/

Workforce

All Data	The Nevada Registry (August 2024). Nevada Child Care Workforce Characteristics [Data file]. Retrieved 8/16/2024 from Shelly Nye, Director.
Trends	Calculations perform by The Children’s Cabinet on data files retrieved from The Nevada Registry in 2018 and 2024.

Attribution Images

Page 1 - Graduation Cap Icon	Attribution license made available for free through The Noun Project. Icon creator Mrfa Studio.
Page 3 - United States Map Icon	Attribution license made available for free through The Noun Project. Icon creator Bence Bezerezy.

Special Thank You

Thank you to Nevada’s early education and care providers for completing the surveys that make this fact sheet possible.

Thank you to The Nevada Registry, Nevada Department of Education, Child Care Licensing and the Division of Welfare and Supportive Services Child Care and Development Program for assisting with the data collection or providing us with data reports.

Thank you to everyone who is dedicated to providing high-quality early learning opportunities for Nevada’s children.

About The Children’s Cabinet

The Children’s Cabinet exists to keep children safe and families together by offering services and resources that address unmet needs, through a unique and effective cooperative effort between the private sector and public agencies in Nevada. The Supporting Early Education and Development department promotes quality child care that is affordable and accessible to all Nevadans. For more information, visit our website: www.childrencabinet.org.

This publication was created by the Supporting Early Education and Development team of The Children’s Cabinet, which is supported in part by funding from the Administration for Children and Families Child Care and Development Fund Quality Dollars through a subaward agreement with Nevada Department of Education Office of Early Learning & Development and Nevada Division of Welfare and Supportive Services Child Care and Development Program (Grant #G996005).